

the dining

635 sq.ft.

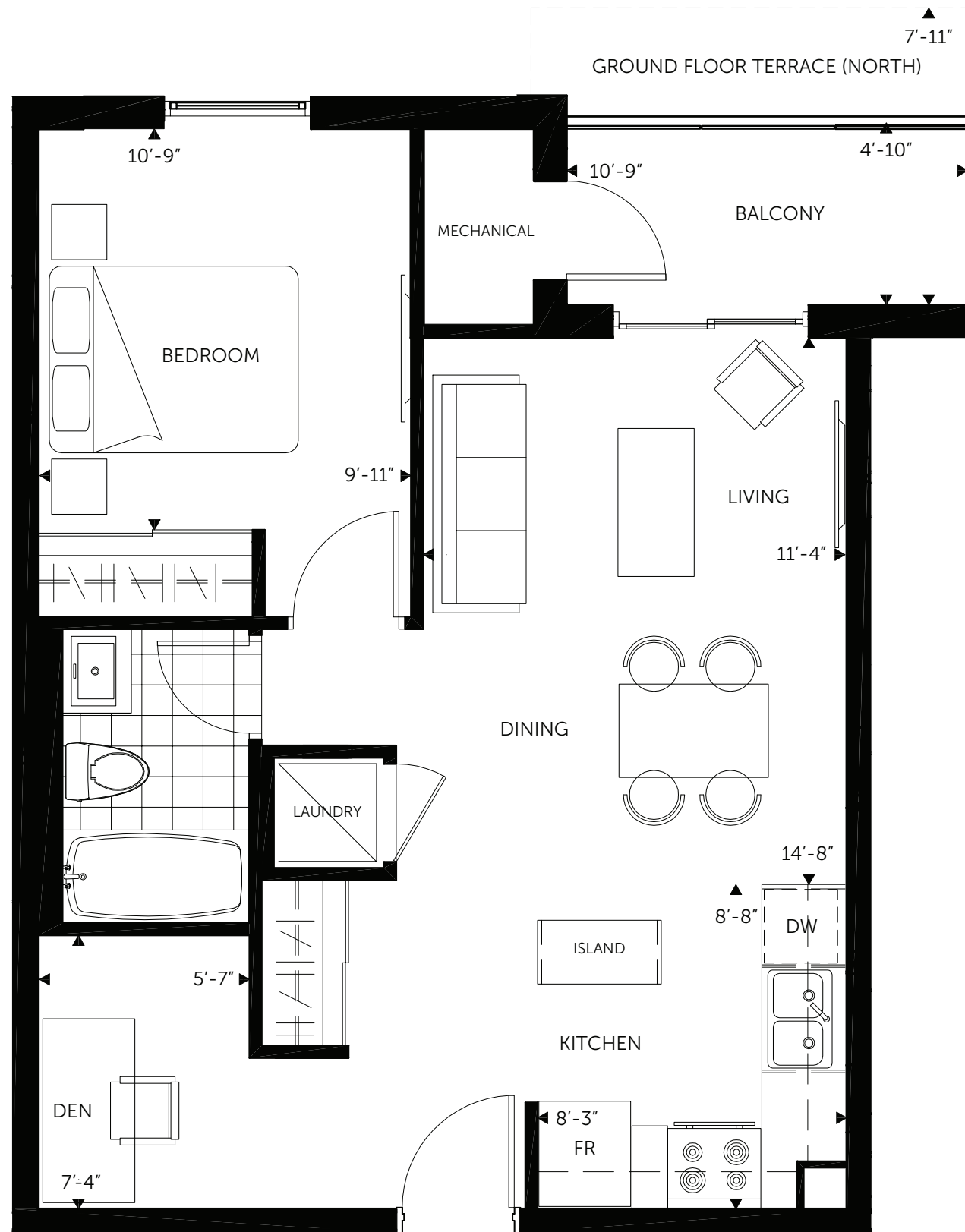
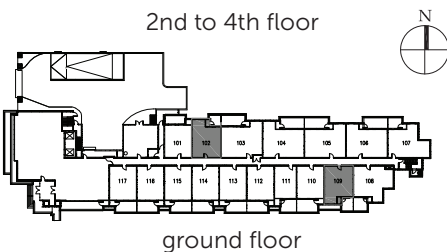
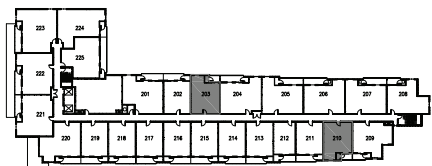
(plus 54 sq.ft. balcony or 88 sq.ft. north terrace, 86 sq.ft. south terrace)

1 bedroom,
1 bath + den

Craving some British fish and chips? Or a plate of pasta marinara? Whether your taste runs to regional Indian cuisine or classic burger and fries, you've got a host of dining choices just minutes from home.

The suite

Serve your signature meals from this stunning chef's island. Relish the look of stainless steel appliances and ceramic backsplash in your airy open concept kitchen. This design offers you lots of space to move about as you practice your culinary skills. Open dining and living areas give you and your guests room to unwind. A perfectly situated den is your new home office.



B2

the dining