

the access

792 sq.ft.

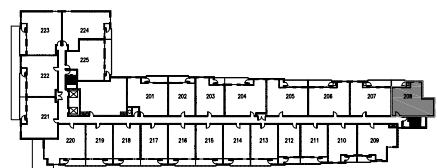
(plus 53 sq.ft. balcony or
84 sq.ft. terrace)

**2 bedrooms,
2 baths**

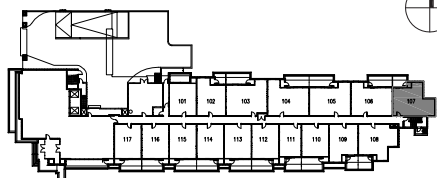
Living here makes life so much easier. You've got quick access to major routes like the Don Valley Parkway, the 401 and Kingston Road. Getting anywhere is a breeze!

The suite

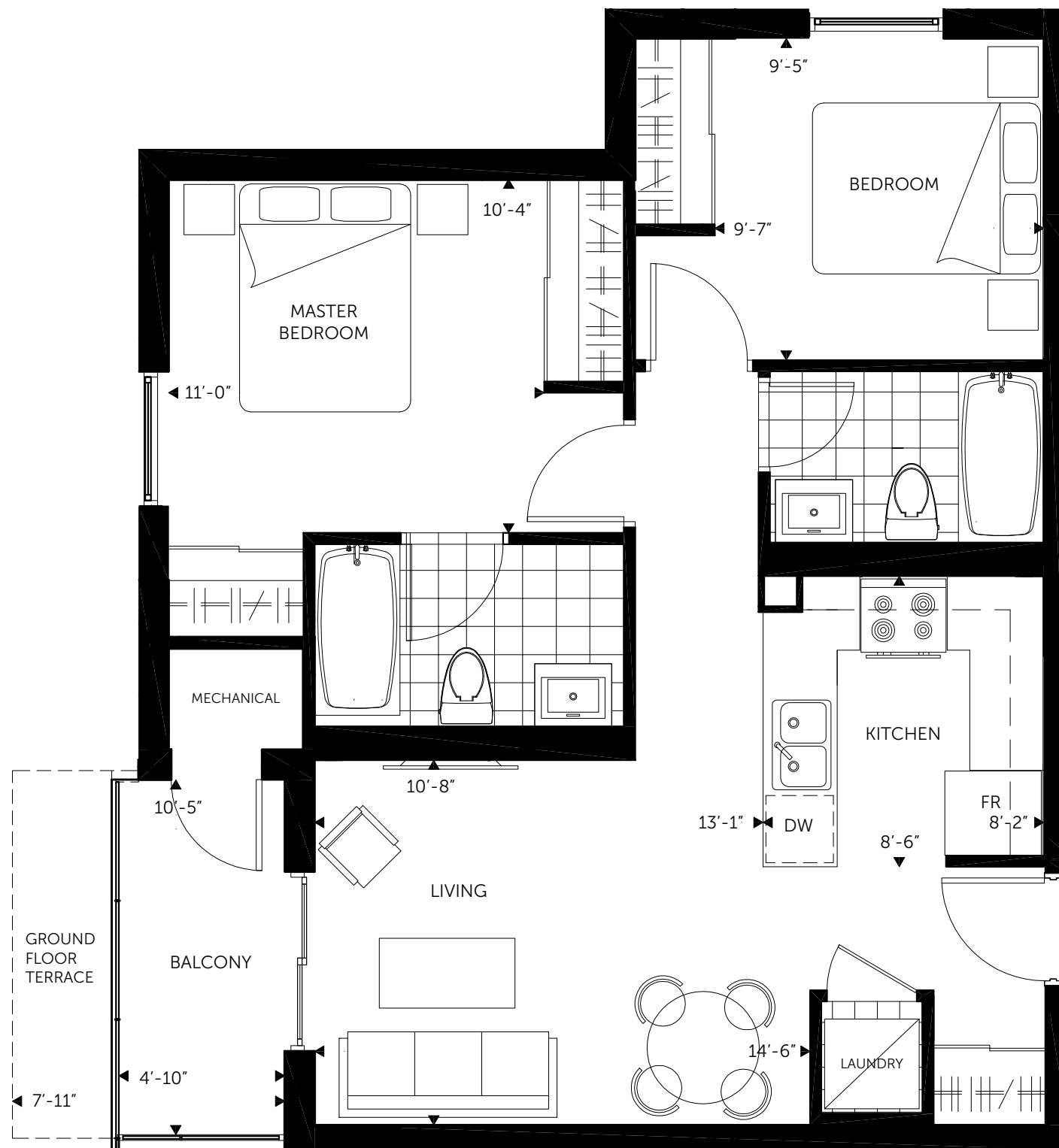
You've got a charming view but that's just the beginning. Your open concept kitchen with stunning stainless steel appliances, ceramic backsplash and laminate floors will impress guests. A spacious master bedroom with his and her closets and an en suite makes an ideal private place. Everything's here for a perfect life!



2nd to 4th floor



ground floor



the access